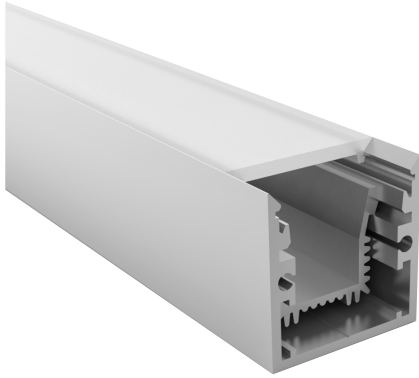


profile 21x21^s



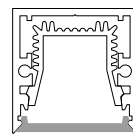
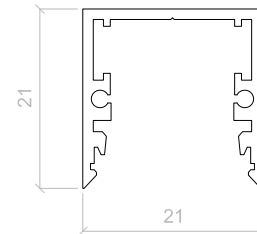
RANGE	PROFILE 21X21
REF.	QBOP21X21-
TYPE	SURFACE PROFILE
DIMENSIONS	21 x 21 x 3000 mm
WEIGHT	1,15 kg
MATERIAL	ALUMINIUM
ALLOY	6063
RESISTANCE	T5
ANODIZE	20µm
FINISH	ALUMINIUM

*Diferentes acabados y opciones de protección IP disponibles bajo pedido
Other finishes and IP ratings available on request

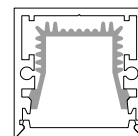
*Compatible con todas las potencias y medidas de tiras de LED qbo Flexy
Compatible with all power and measures of qbo Flexy LED strips



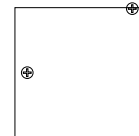
CODE	DESCRIPTION
QBOP21X21S	PROFILE 21x21 surface 3000mm
QBOP21X21DSE	PROFILE 21x21 diffuser surface/recessed 3000mm
QBOP21X21HS	PROFILE 21x21 heat sink single 3000mm
QBOP21X21TS	PROFILE 21x21 end caps surface (2 units)



QBOP21X21DSE



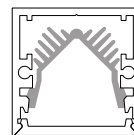
QBOP21X21HS



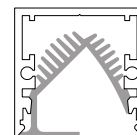
QBOP21X21TS

profile 21x21^{acc}

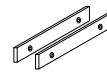
CODE	DESCRIPTION
QBOP21X21HD	PROFILE 21x21 heat sink double asymmetric 3000mm
QBOP21X21HG	PROFILE 21x21 heat sink fissure 3000mm
QBOP01UL	PROFILE 01 6x1mm linear union (2 units)
QBOP01UAE	PROFILE 01 6x1mm angular union (2 units)
QBOP01UAP	PROFILE 01 6x1mm angular union flat (2 units)



QBOP21X21HD



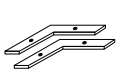
QBOP21X21HG



QBOP01UL



QBOP01UAE



QBOP01UAP