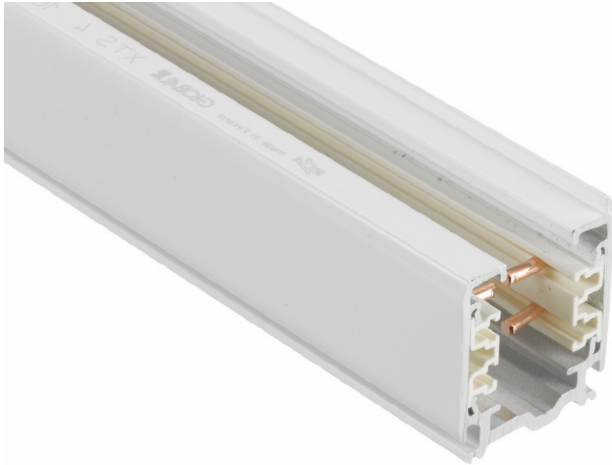


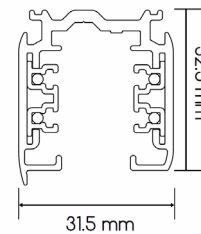
track



RANGE	TRACK
REF.	XTS4-
TYPE	SURFACE TRACK
DIMENSIONS	H 32,5 x L 1000/2000/3000 x W 31,5 mm
MATERIAL	ALUMINIUM
FINISH	WHITE / BLACK / GREY



CODE	DESCRIPTION
XTS4100-3	TRACK 3-PHASE surface 1 meter white
XTS4100-2	TRACK 3-PHASE surface 1 meter black
XTS4100-1	TRACK 3-PHASE surface 1 meter grey
XTS4200-3	TRACK 3-PHASE surface 2 meters white
XTS4200-2	TRACK 3-PHASE surface 2 meters black
XTS4200-1	TRACK 3-PHASE surface 2 meters grey
XTS4300-3	TRACK 3-PHASE surface 3 meters white
XTS4300-2	TRACK 3-PHASE surface 3 meters black
XTS4300-1	TRACK 3-PHASE surface 3 meters grey



track^{acc}

ODE	DESCRIPTION
XTS21-3	TRACK 3-PHASE straight connector white
XTS21-2	TRACK 3-PHASE straight connector black
XTS21-1	TRACK 3-PHASE straight connector grey
XTS41-3	TRACK 3-PHASE end cap white
XTS41-2	TRACK 3-PHASE end cap black
XTS41-1	TRACK 3-PHASE end cap grey
XTS12-3	TRACK 3-PHASE right feeder white
XTS12-2	TRACK 3-PHASE right feeder black
XTS12-1	TRACK 3-PHASE right feeder grey