

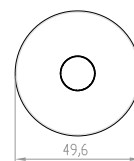
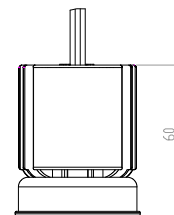
led module^{DC}



RANGE	TRIDONIC LED MODULE DC
REF.	TR2800194-
TYPE	GU10 LED LAMP
DIMENSIONS	Ø49,6 x 60 mm
FREE HEIGHT FOR INSTALLATION	80 mm
WEIGHT	0,09 kg
FINISH	GREY AND BLACK
VOLTAGE	30 V - 40 V
FEEDER KIT	250mA (NOT INCLUDED)
DIMMABLE	YES
POWER	8,8 W
SERVICE LIFE	50.000h (L70)
IP RATING	IP20
OPERATING TEMPERATURE	-20 a 40 °C
LIGHTING DISTRIBUTION	DIRECT
COLOR TEMPERATURE	2700 K / 3000 K / 4000 K
CRI	>90
MACADAM ELLIPSE	3
LIGHTING FLUX	770 lm / 840 lm / 890 lm
LUMINOUS EFFICACY	88 lm/W / 95 lm/W / 101 lm/W
OPENING DEGREES	24° / 36°



CODE	DESCRIPTION
TR28001942	LED MODULE DC 8,8W 2700K 24° Ra90 770lm IP20 (driver not included)
TR28001943	LED MODULE DC 8,8W 2700K 36° Ra90 770lm IP20 (driver not included)
TR28001944	LED MODULE DC 8,8W 3000K 24° Ra90 840lm IP20 (driver not included)
TR28001945	LED MODULE DC 8,8W 3000K 36° Ra90 840lm IP20 (driver not included)
TR28001946	LED MODULE DC 8,8W 4000K 24° Ra90 890lm IP20 (driver not included)
TR28001947	LED MODULE DC 8,8W 4000K 36° Ra90 890lm IP20 (driver not included)



drivers

DIMMABLE FEEDER KIT no incluido / not included	
TR28000673	LCA 10W 150-400mA one4all SC PRE
TR28001168	ACU SC 43x30mm CLIP-ON SR SET
TR28001106	I-SELECT 2 PLUG 250MA BL