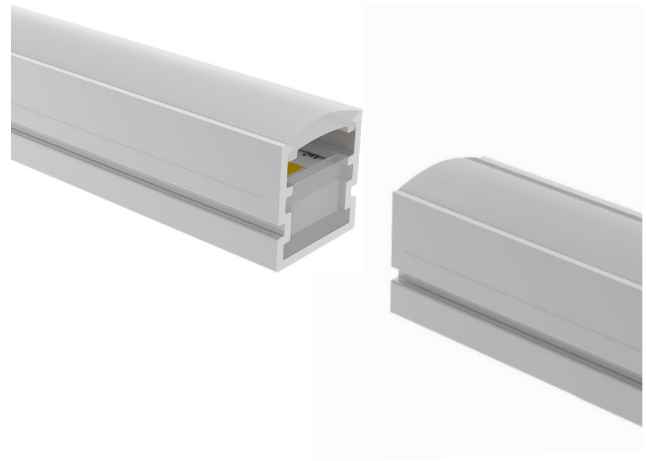


profile 10alf10

RANGE	PROFILE 10alf10
REF.	QBOP10alf10-
TYPE	SURFACE
DIMENSIONS	10 x 10 x 1000 mm
MATERIAL	ALUMINIUM
MAXIMUM RUN LENGTH	5000 mm
ALLOY	6063
FINISH	ALUMINIUM
VOLTAGE	24 V
FEEDER KIT	NOT INCLUDED
POWER	13 W/m
PLUG-IN SYSTEM	BIPOLAR
IP RATING	IP20
LIGHTING DISTRIBUTION	DIRECT
COLOR TEMPERATURE	2700K/3000K/4000K
CRI	80
LIGHTING FLUX	1540 lm/m
LUMINOUS EFFICACY	103 lm/W
MOUNTING SYSTEM	FIXING CLIP
DIFFUSER	INCLUDED



*Bipolar lineal luminaire. It carries an electronic that allows to reverse the polarity in case of necessity. Easy plug-and-play without worrying about which is the positive or the negative pole.

*Todos los perfiles qbo se extruyen a partir de la aleación 6063 de aluminio reciclado de segunda fusión. All qbo profiles are extruded from 6063 recycled aluminum alloy, at least second fusion.



CODE	DESCRIPTION
QBOP10alf101527.100	Profile 10alf10 surface 100mm 15W/m 2700K Ra80 150lm IP20 24V
QBOP10alf101530.100	Profile 10alf10 surface 100mm 1,5W/m 3000K Ra80 150lm IP20 24V
QBOP10alf101540.100	Profile 10alf10 surface 100mm 1,5W/m 4000K Ra80 150lm IP20 24V
QBOP10alf101527.1000	Profile 10alf10 surface 1000mm 15W/m 2700K Ra80 1540lm IP20 24V
QBOP10alf101530.1000	Profile 10alf10 surface 1000mm 15W/m 3000K Ra80 1540lm IP20 24V
QBOP10alf101540.1000	Profile 10alf10 surface 1000mm 15W/m 4000K Ra80 1540lm IP20 24V
QBOP10alf10C	Profile 10alf10 end cap
QBOP10alf10DC.150	Profile 10alf10 double connector 150mm
QBOP10alf10DC.1500	Profile 10alf10 double connector 1500mm
QBOP10alf10U	Profile 10alf10 linear electric union
QBOP10alf10F0	Profile 10alf10 fixing clip 0°
QBOP10alf10F15	Profile 10alf10 fixing clip 15°
QBOP10alf10F40	Profile 10alf10 fixing clip 40°

