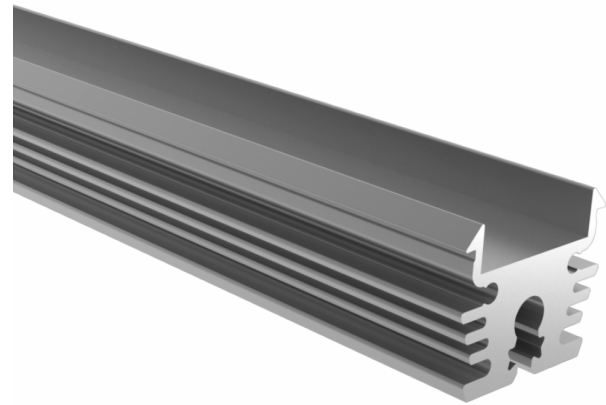


## profile 18x15

|            |                      |
|------------|----------------------|
| RANGE      | QBO 18x15            |
| REF.       | QBOP18-              |
| TYPE       | FLEXYLED ACCESSORIES |
| DIMENSIONS | 18 x 15 x 2000 mm    |
| WEIGHT     | 0,82 Kg              |
| MATERIAL   | ALUMINIUM            |
| ALLOY      | 6063                 |
| RESISTANCE | T5                   |
| ANODIZE    | 20µm                 |
| FINISH     | ALUMINIUM ANODIZED   |



\*Diferentes acabados y opciones de protección IP disponibles bajo pedido  
Other finishes and IP ratings available on request

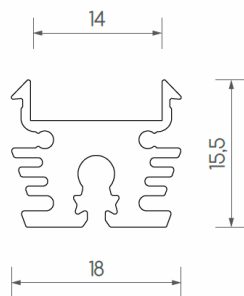
\*Compatible con todas las potencias y medidas de tiras de LED qbo Flexy  
Compatible with all power and measures of qbo Flexy LED strips

\*Linear Lens Transparent debe instalarse siempre completamente adosada al paramento a bañar, sin distancia entre el perfil y el paramento.  
Linear Lens Transparent must always be installed completely attached to the wall, with no distance between the profile and the wall.

\*Todos los perfiles qbo se extruyen a partir de la aleación 6063 de aluminio reciclado de segunda fusión.  
All qbo profiles are extruded from 6063 recycled aluminum alloy, at least second fusion.



| CODE      | DESCRIPTION          |
|-----------|----------------------|
| QBOP18X15 | PROFILE 18x15 2000mm |



## 18x15<sup>acc</sup>

| CODE       | DESCRIPTION  |
|------------|--|
| QBOP18DWC  | PROFILE 18 Diffuser Curved White 2000mm                            |
| QBOP18DFC  | PROFILE 18 Diffuser Curved Frosted 2000mm                          |
| QBOP18DTC  | PROFILE 18 Diffuser Curved Transparent 2000mm                      |
| QBOP18LT30 | PROFILE 18 Linear Lens 30° Transparent 2000mm                      |
| QBOP18LT60 | PROFILE 18 Linear Lens 60° Transparent 2000mm                      |
| QBOP18LT90 | PROFILE 18 Linear Lens 90° Transparent 2000mm                      |
| QBOP18LF30 | PROFILE 18 Linear Lens 30° Frosted 2000mm                          |
| QBOP18LF60 | PROFILE 18 Linear Lens 60° Frosted 2000mm                          |
| QBOP18LF90 | PROFILE 18 Linear Lens 90° Frosted 2000mm                          |
| QBOP18X15C | PROFILE 18x15 End cap with cable hole for diffuser curved (1 unit) |
| QBOP18X15C | PROFILE 18x15 End cap for diffuser curved (1 unit)                 |
| QBOP06F0   | MULTIPLE FIXING CLIP 0°  |
| QBOP06F45  | MULTIPLE FIXING CLIP 45°   |