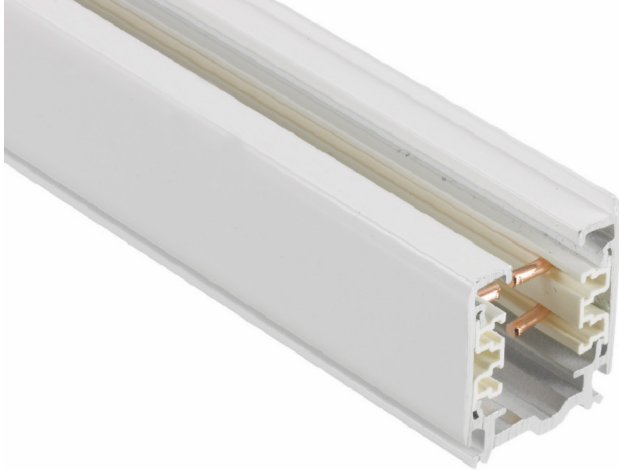


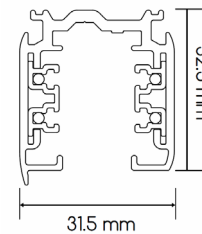
track



RANGE	TRACK
REF.	XTS4-
TYPE	SURFACE TRACK
DIMENSIONS	H 32,5 x L 1000/2000/3000 x W 31,5 mm
MATERIAL	ALUMINIUM
FINISH	WHITE / BLACK / GREY
DIMMABLE	DALI



CODE	DESCRIPTION
XTSC6100-3	TRACK 3-PHASE surface 1 meter white dali
XTSC6100-2	TRACK 3-PHASE surface 1 meter black dali
XTSC6100-1	TRACK 3-PHASE surface 1 meter grey dali
XTSC6200-3	TRACK 3-PHASE surface 2 meters white dali
XTSC6200-2	TRACK 3-PHASE surface 2 meters black dali
XTSC6200-1	TRACK 3-PHASE surface 2 meters grey dali
XTSC6300-3	TRACK 3-PHASE surface 3 meters white dali
XTSC6300-2	TRACK 3-PHASE surface 3 meters black dali
XTSC6300-1	TRACK 3-PHASE surface 3 meters grey dali



track^{acc}

CODE	DESCRIPTION
XTS(C)621-3	TRACK 3-PHASE straight connector white dali
XTS(C)621-2	TRACK 3-PHASE straight connector black dali
XTS(C)621-1	TRACK 3-PHASE straight connector grey dali
XTS41-3	TRACK 3-PHASE end cap white
XTS41-2	TRACK 3-PHASE end cap black
XTS41-1	TRACK 3-PHASE end cap grey
XTSC640-1	TRACK 3-PHASE T right feeder A white dali
XTSC640-2	TRACK 3-PHASE T right feeder A grey dali
XTSC640-3	TRACK 3-PHASE T right feeder A black dali