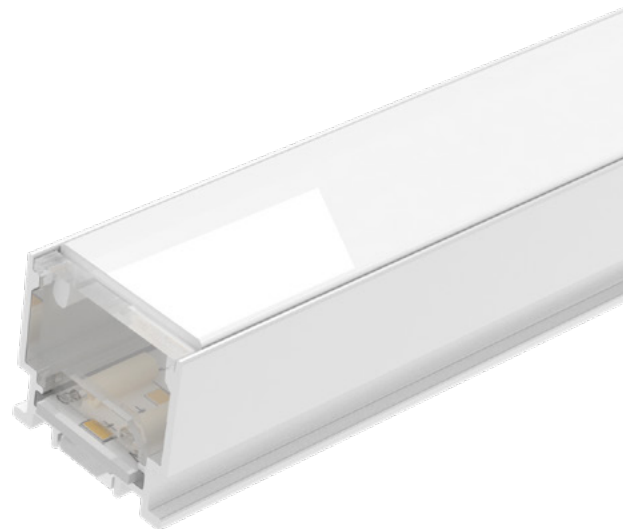
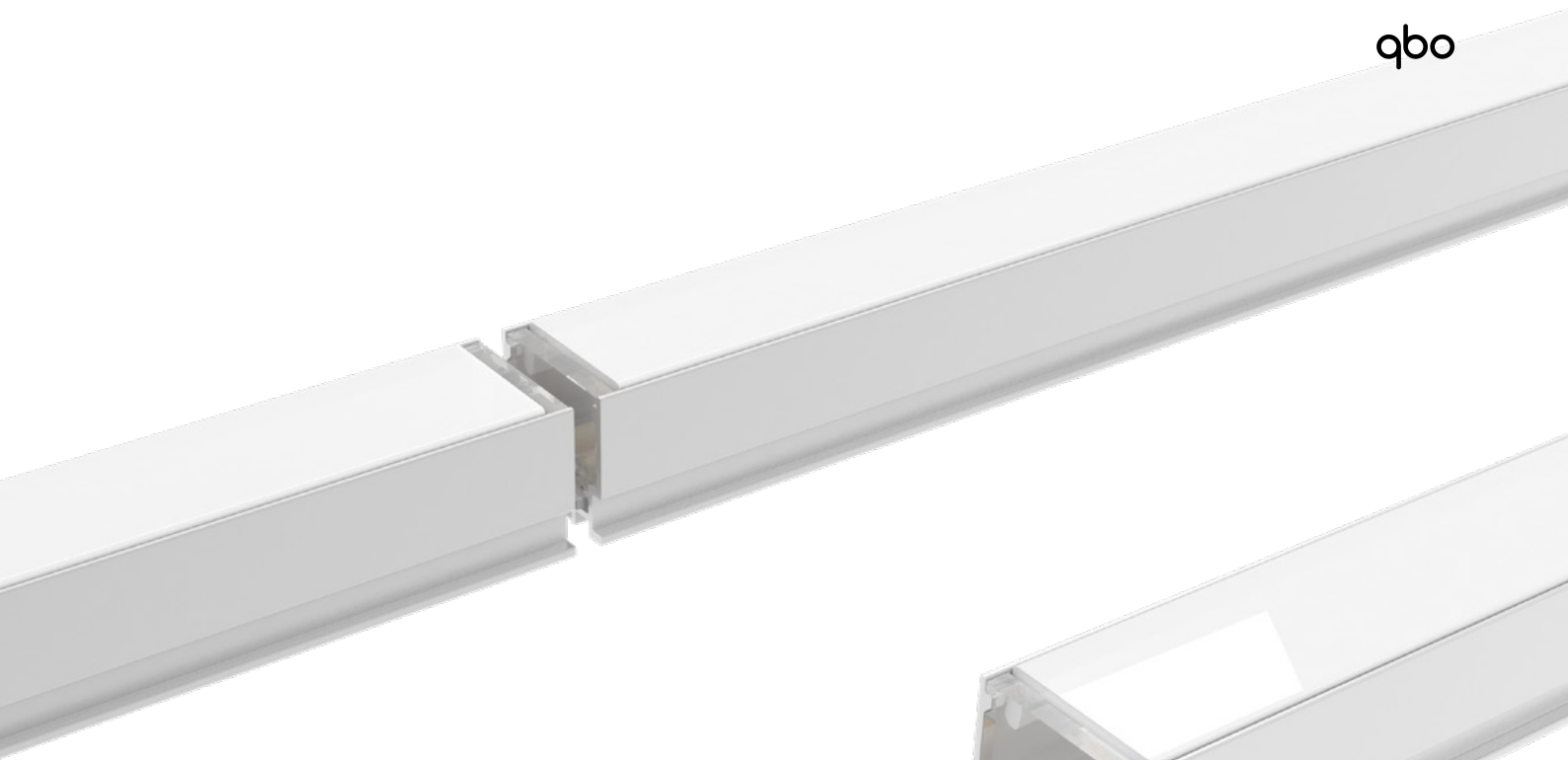


qbo
p16x15

qbo



1000-2000mm
2300 lm/m
3000k
CRI80



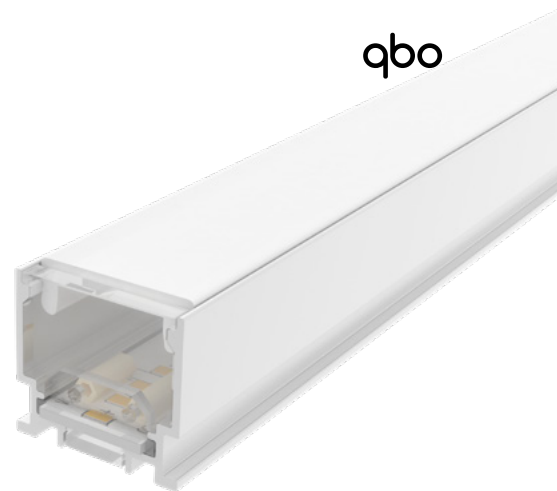
p16x15

p16x15

qbo

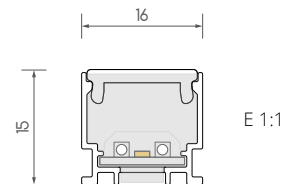
Luminaria de aluminio extruido con acabado anodizado de 20 micras, con tira de LED de 18W/m y 2300lm/m, difusor y tapas incluidos. Sistema de fácil conexión entre luminarias mediante uniones mecánicas y eléctricas que facilitan su instalación. Transformador de 24V no incluido.

20 micron anodized extruded aluminum profile, with 18W/m and 2300lm/m LED strip, diffuser and end caps included. Easy 'plug&play' connection system between luminaires through mechanical and electrical connections that facilitate their installation. 24V driver not included.



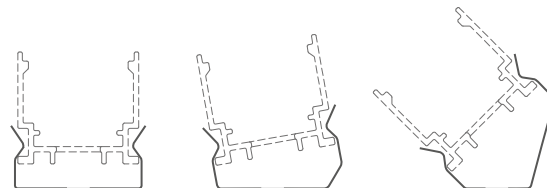
| COD. | DESC. |
|----------------|--|
| QBOP16X15.1000 | PROFILE 16X15 SURFACE 18W 3000K 1000MM RA80 2300LM IP20 24 |
| QBOP16X15.2000 | PROFILE 16X15 SURFACE 36W 3000K 2000MM RA80 4600LM IP20 24 |

Tapas finales incluidas / End caps included



| COD. | DESC. |
|--------------|-------------------------------|
| QBOP16X15F0 | PROFILE 16X15 FIXING CLIP 0° |
| QBOP16X15F15 | PROFILE 16X15 FIXING CLIP 15° |
| QBOP16X15F40 | PROFILE 16X15 FIXING CLIP 40° |

Diferentes acabados y opciones de protección IP disponibles bajo pedido
Other finishes and IP ratings available on request



p16x15



| COD. | DESC. |
|------------|----------------------------|
| QBOP16X15U | PROFILE 16X15 LINEAR UNION |



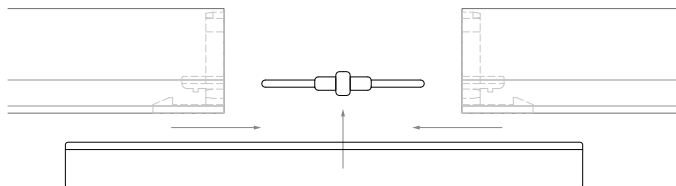
| COD. | DESC. |
|-------------|---|
| QBOP16X15SC | PROFILE 16X15 SINGLE CONNECTOR 1000MM(1 UNIT) |



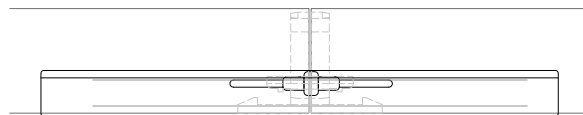
| COD. | DESC. |
|-------------|--|
| QBOP16X15DC | PROFILE 16X15 DOUBLE CONNECTOR 1000MM (1 UNIT) |

ρ16x15

Esquema de instalación Installation scheme

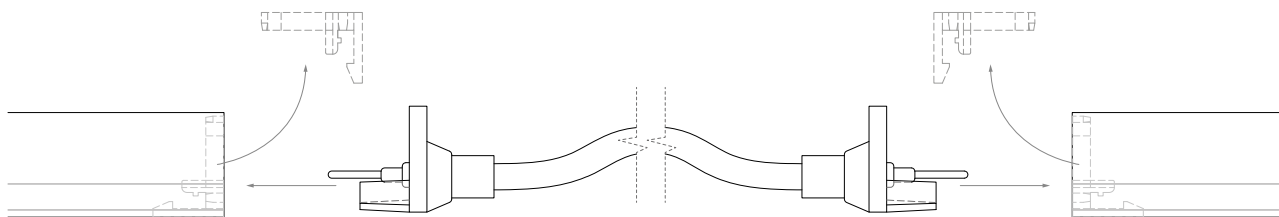
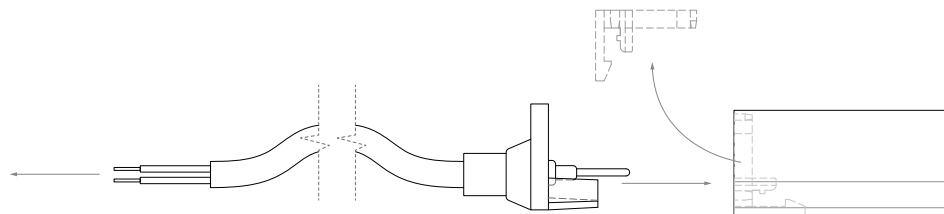


Unión lineal: colocar en primer lugar la conexión eléctrica en uno de los lados del perfil, a continuación unir ambos perfiles y colocar el clip para reforzar la unión.



Linear union: First place the electric union in one side of the profile, then join both profiles and afterwards place the clip to reinforce the joint in the middle of the union.

Conexión al transformador
Connection to driver



Conector doble: Retirar cualquiera de las dos tapas de dos perfiles con ayuda de herramienta y colocar el conector de doble.

Double connector: remove either profile caps with the help of a tool and place the double connector.

